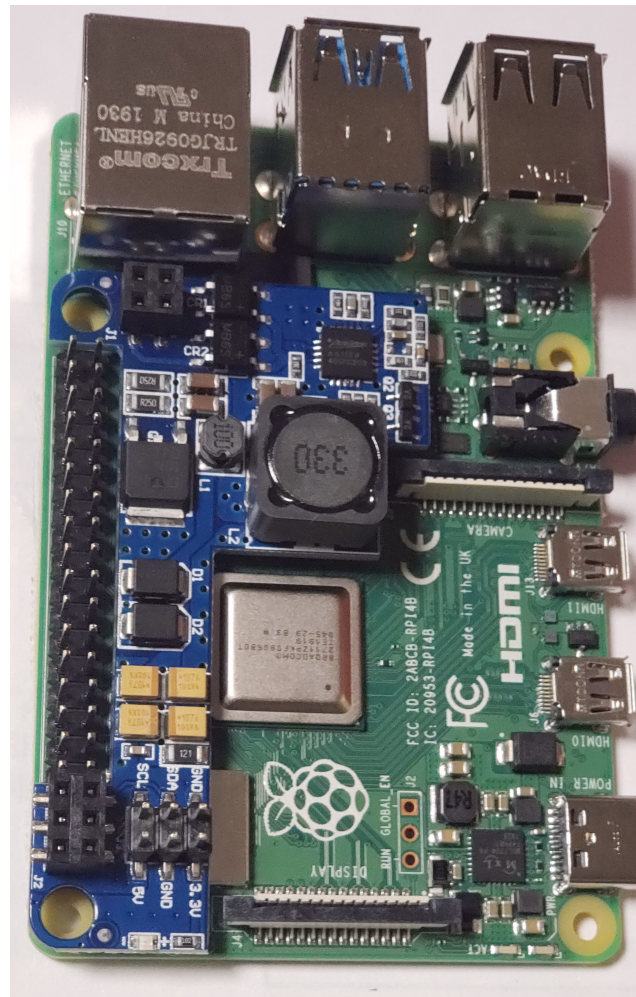


1. Peel off the backing of double sided tape from PoE board

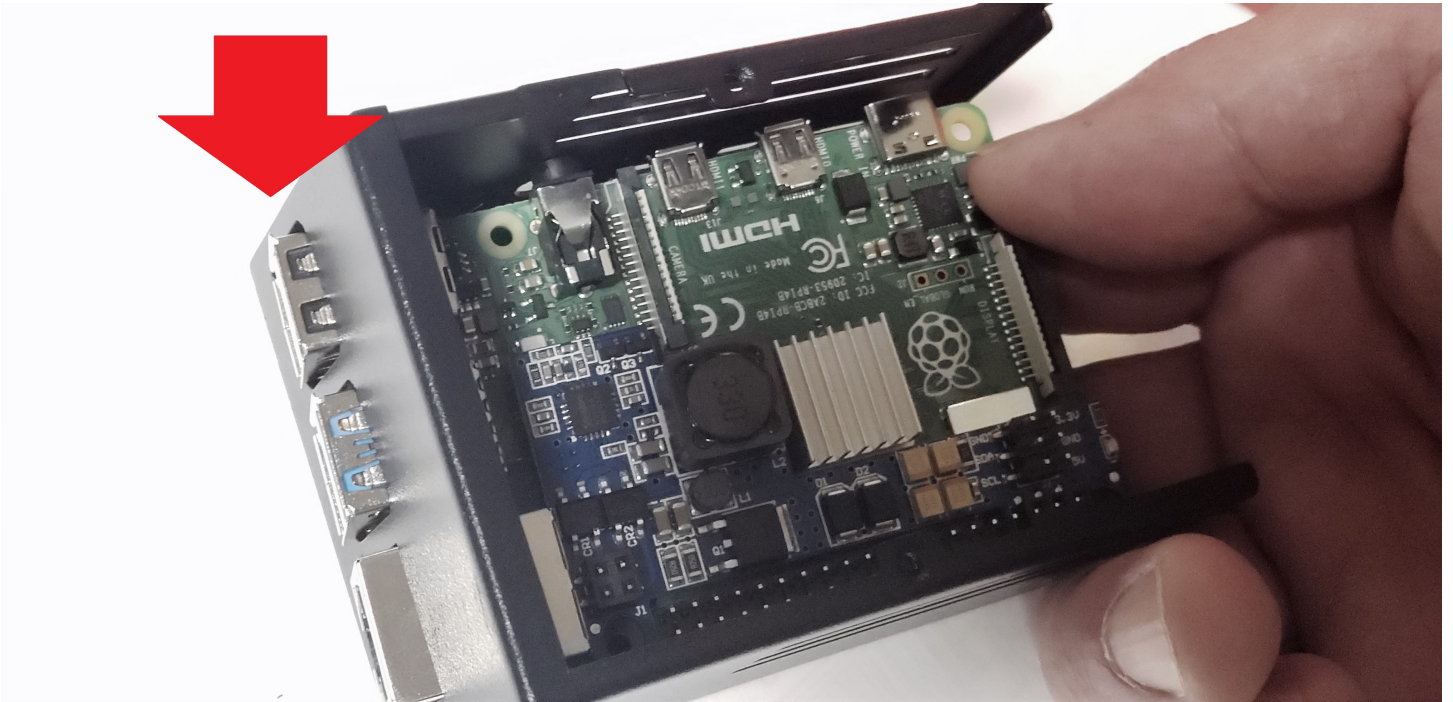
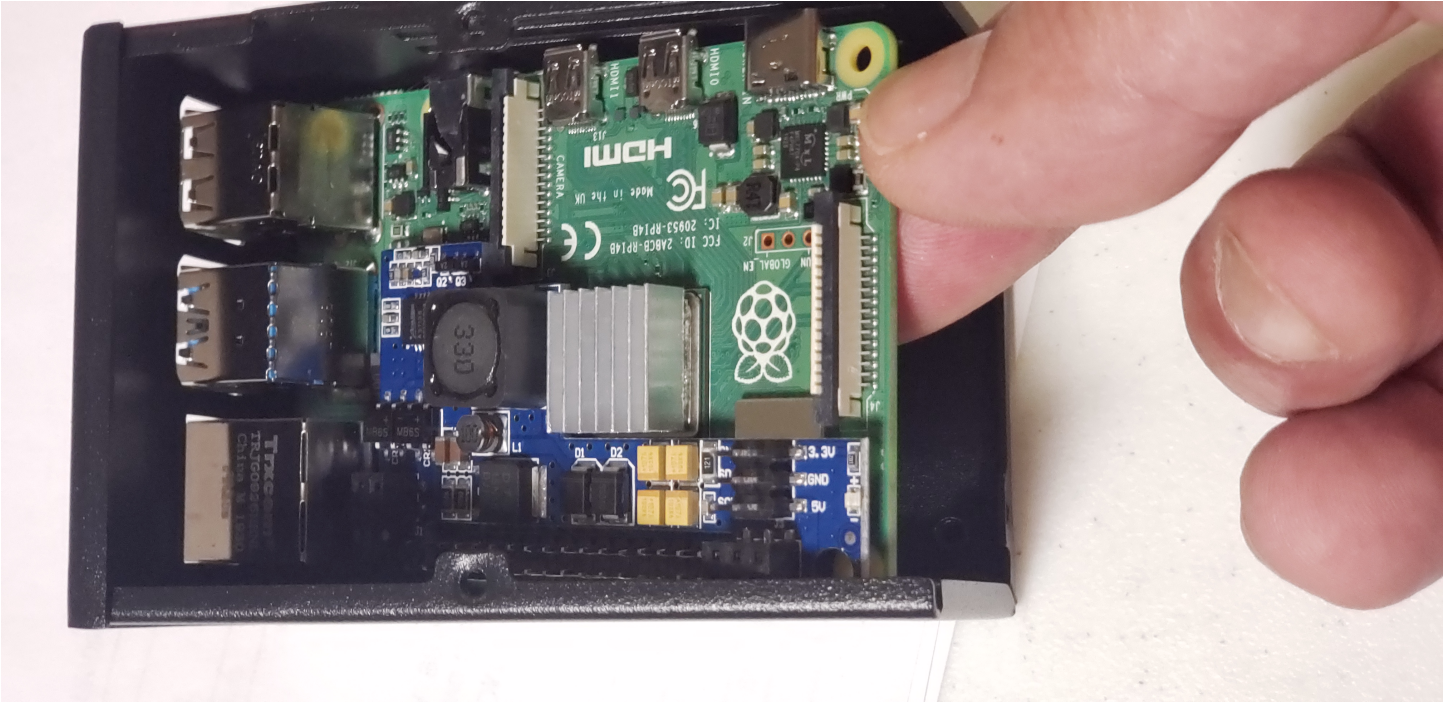


2. Install PoE board on your RPi 4



3. Peel off the backing and install heat sink on RPi

The case has a very tight fit, put the board in at an angle, lay down the board when the ports are outside the case.



Install the 4 screws.



Install the fan on case cover with the label side down.



Connect Fan power Black to GND, Red to 5V. If you prefer low fan noise connect Red to 3.3V



Install the 4 case screws and your installation is completed.
This unit is now PoE power only, do not connect 5V power to USB C input.

